



# City of Napoleon, Ohio

## Zoning Department

255 West Riverview Avenue, P.O. Box 151

Napoleon, OH 43545

Kevin Schultheis Code Enforcement / Zoning Administrator

Telephone: (419) 592-4010 Fax: (419) 599-8393

[www.napoleonohio.com](http://www.napoleonohio.com)

### **COMMERCIAL ZONING PERMIT**

Issued Date: April 24, 2023

Expiration Date: April 20, 2024

Permit Number: P-23-052

Job Location: 330 S. Perry Street

Owner: Jay Petroleum Inc.  
533 S 200 W.  
Portland, IN 47371

Contractor: Paragon Installations  
Phone: 219-947-3446

Zone: C-1 General Commercial

Comments: Canopy Signage, pump signage, post signage

Permit Type: Sign

Fee: \$67.03

Status: Paid

Amount Due: \$0.00

  
Kevin Schultheis  
Code Enforcement/Zoning Administrator



CITY OF NAPOLEON  
BUILDING & ZONING DEPARTMENT  
255 W. Riverview Avenue, PO Box 151, Napoleon, OH 43545  
Phone: 419-592-4010 - Fax: 419-599-8393

APPLICATION FOR SIGN PERMIT

LOCATION OF PROPERTY: 330 S Perry Street

OWNER NAME: Jay Petroleum Inc PHONE: 260-766-2053

OWNER ADDRESS: 533 S 200 W Portland IN

CONTRACTOR NAME: Paragon Installations PHONE: 219-947-3446

IS CONTRACTOR REGISTERED WITH THE CITY OF NAPOLEON?  YES  NO

SIGN INFORMATION loop mtd face - 98" x 96" - 64.83sf mtd pice face - 98" x 96" - 44.4sf  
(1) wordmark - 3'6" x 14' x 8" 49sf

TYPE:  POST  WALL  GROUND  AWNING

DIMENSIONS: 42" x 52 3/8" x 5 1/4" (2) canopy 1020 = TOTAL S.F. 210.16  
SF - 15.75

\*\* PLEASE INCLUDE ANY AND ALL SITE PLANS AND PLANS OF ABOVE SIGNS. owe: \$69.03

FEES:

\$35.00 BASE UP TO 50 S.F. OF SIGN, PLUS \$0.20 PER ADDITIONAL S.F., NOT TO EXCEED \$150.00 (100-3100-46610)

\$5.00 FLAT FEE FOR TEMPORARY SIGNS, TEMPORARY SPECIAL EVENT SIGNS, AND PORTABLE SIGNS OTHER THAN THOSE EXEMPT FROM FEE. (SEE BELOW)

NO FEE REQUIRED FOR TEMPORARY AND EASILY REMOVABLE 1<sup>ST</sup> AMENDMENT SIGNS, OR SIGNS RELATED TO RELIGIOUS OR CHARTIABLE CAUSES OR EVENTS.

ESTIMATED CONSTRUCTION COST \$ 40,000

[Signature]  
APPLICANT SIGNATURE

4/19/23  
DATE

Batch \_\_\_\_\_ Check \_\_\_\_\_ Date \_\_\_\_\_



# Image Brand Book

Requestor: Steve Bockman

Jobber: Jay Petroleum

Dealer: 258657

Site Address: 330 S Perry St., Napoleon, OH 43545

# Canopy Layout

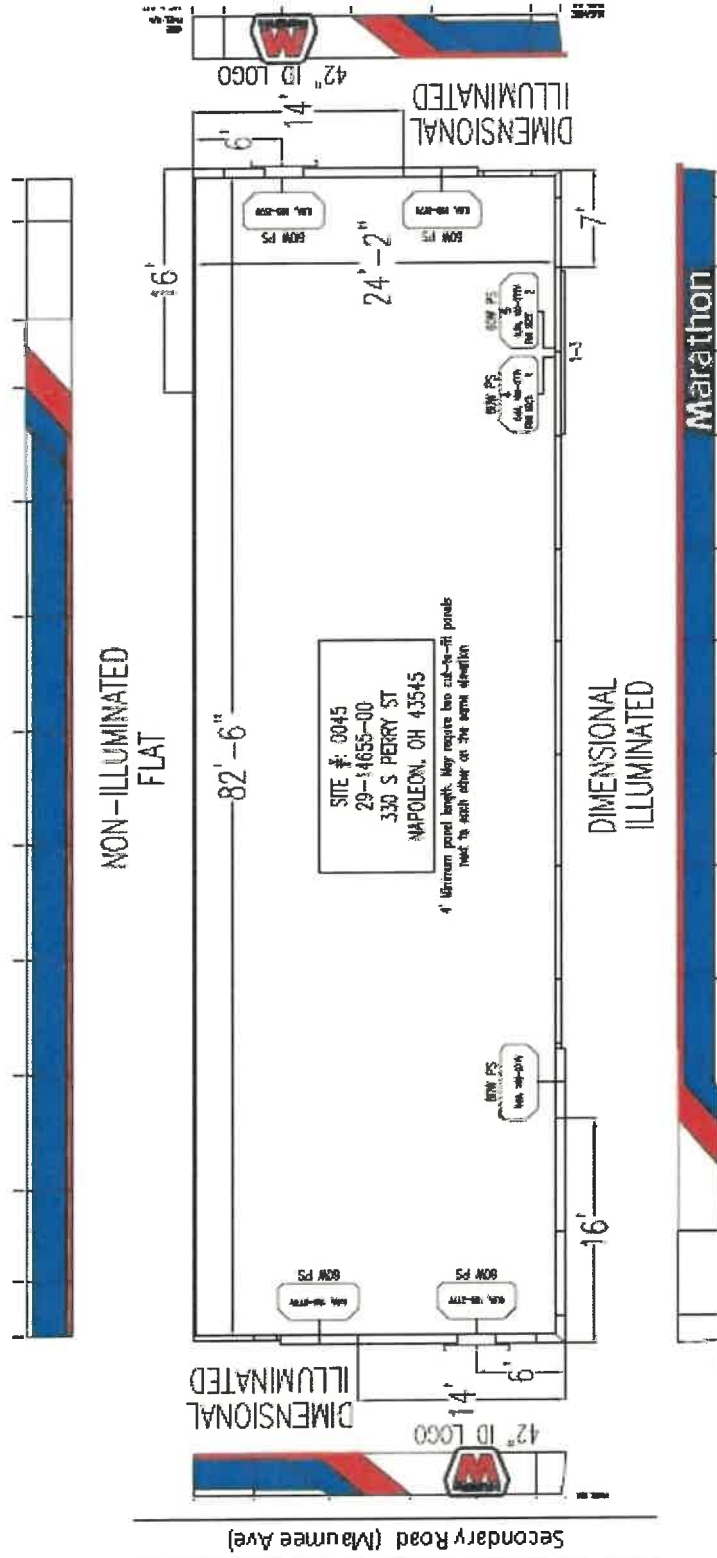
## MARATHON Plan View Fascia: 36" Logo: Standard

- Extension Kit  Radius Kit

Approved By: \_\_\_\_\_  
Date: \_\_\_\_\_  
Lead Time: Approx 4 weeks

Store

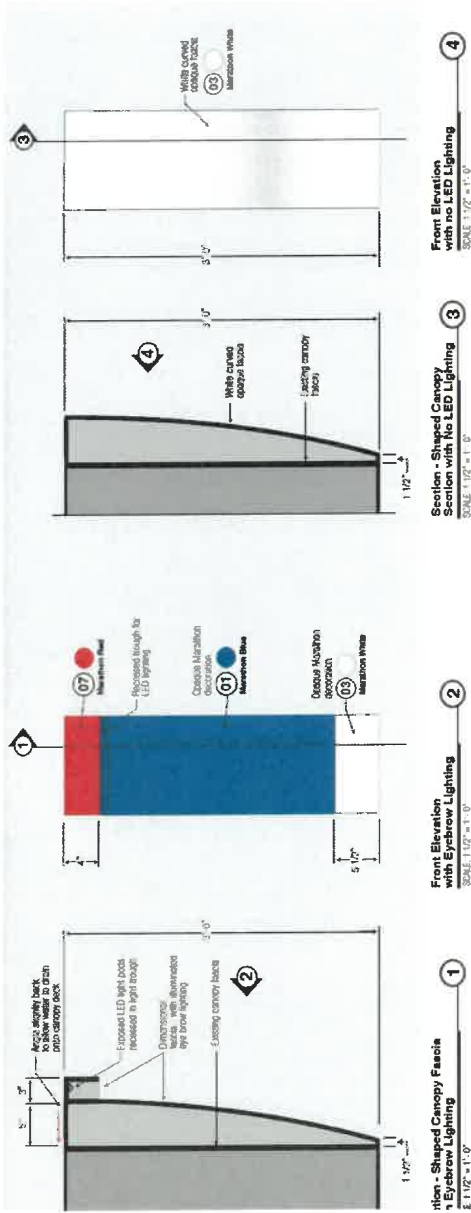
Special Note(s):



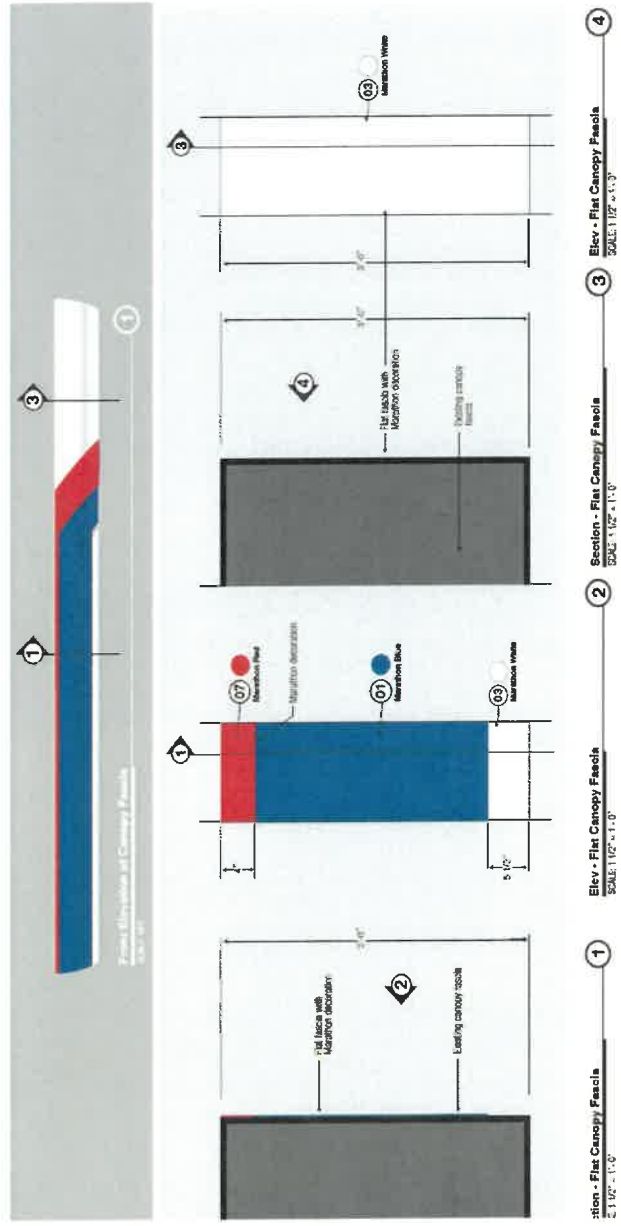
Note: Layout must be approved and returned to process order.  
Primary Road (Perry St.)



## DIMENSIONAL

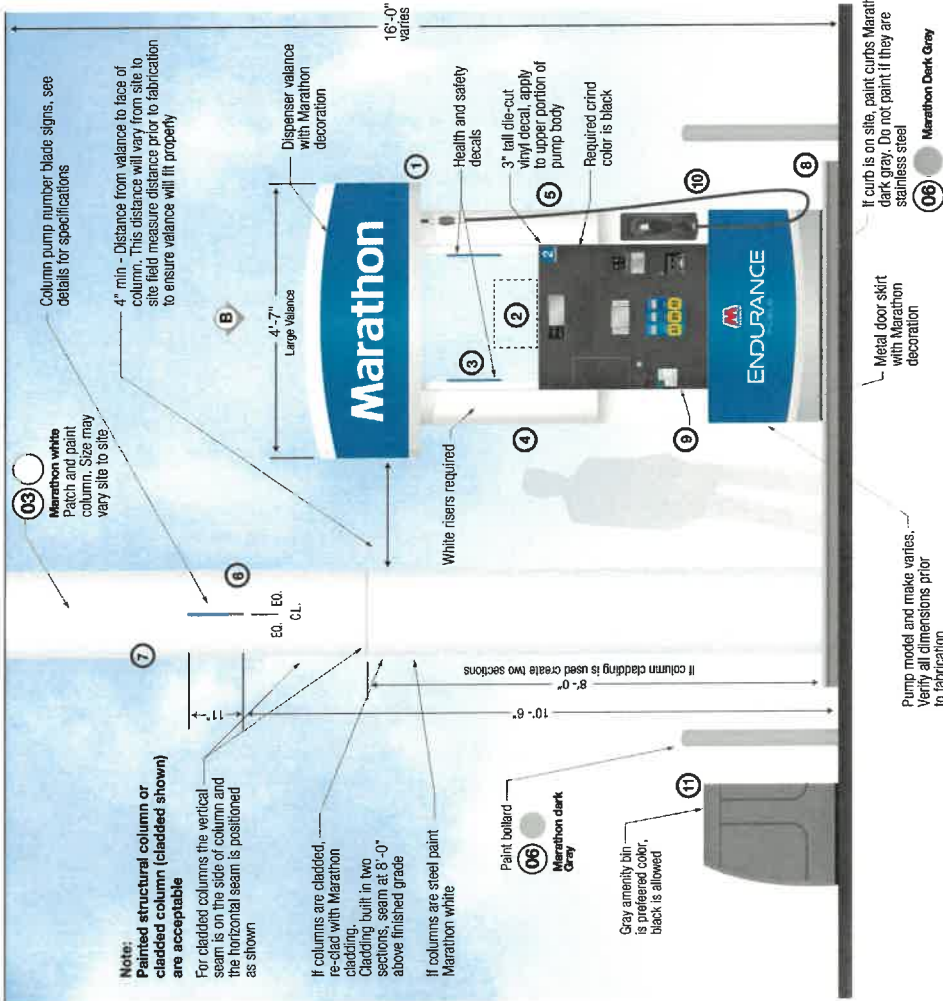


## FLAT



# Dispenser Layout





**Typical Pump Island Elevation**

SCALE: 1/2" = 1'-0"

## Dispenser Notes:

- Dispensers should be cleaned regularly and have an uncluttered appearance. Discretionary dispenser signage should be limited, and all must be professionally produced by approved suppliers.
- Help maximize the impact of the Marathon image project by having contractor remove all old decals and clean the entire dispenser before applying the new image. Replace damaged risers, facings on dispenser.

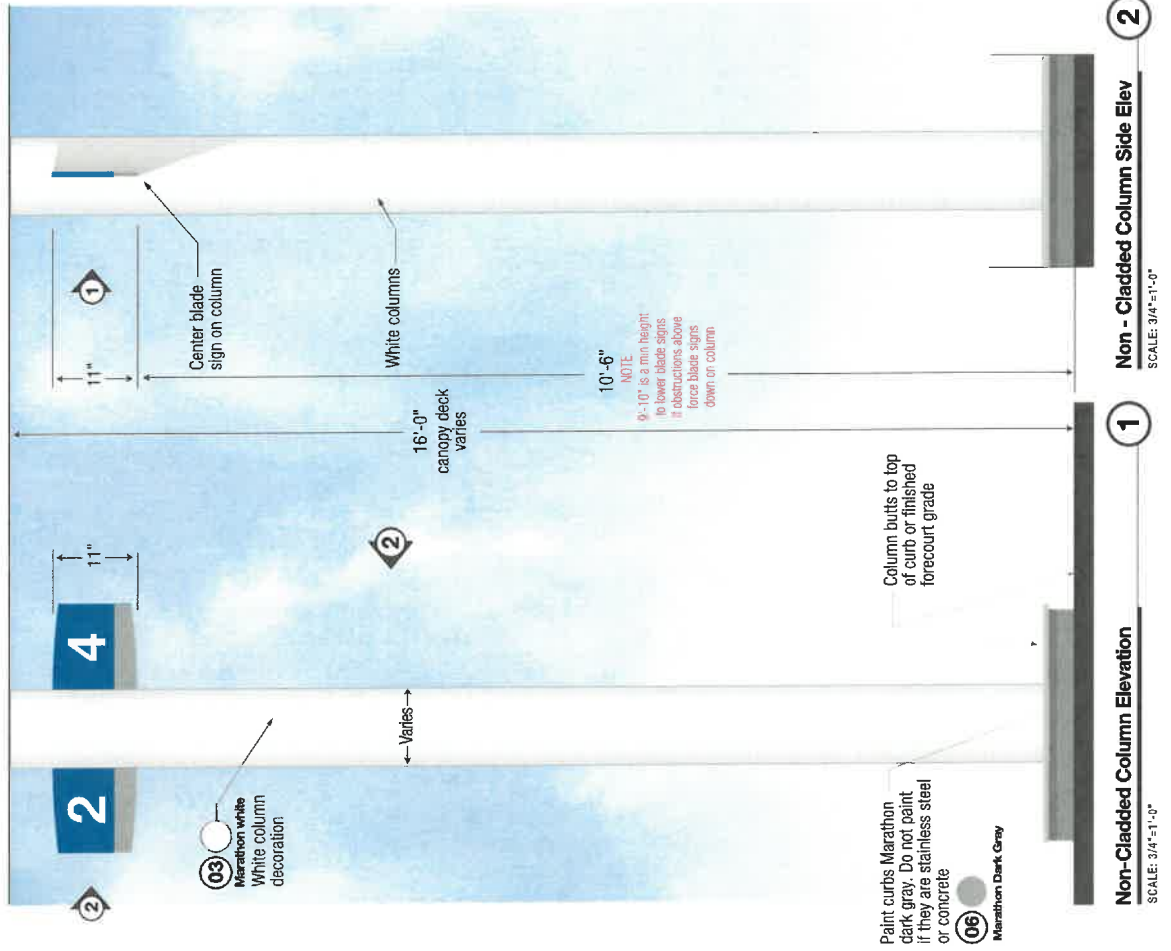
## Fuel Island Legend:

- Valance**  
Marathon aluminum proprietary shape decorated valance. Verify distance between dispenser riser and column prior to fabrication to ensure the valance will fit properly. Follow visual graphic standards. Use only approved Marathon suppliers. Verify all site conditions prior to fabrication.  
**2 valance options: Bent metal valance and internally illuminated valance.**
- Pump Topper**  
Use approved pump toppers. See Marathon reimage team for standard.
- Safety Decal**  
Comply with all safety warning information that is required on dispenser. If damaged these decals should be replaced.
- Dispensers**  
See image standard dispenser drawings. Add new polycoat to the bezel area of dispensers if these areas are damaged. Reapply safety decals as needed.  
**Note:**  
Required riser colors: White  
Required crind color: Black
- Pump Number Decals**  
Pump number decal to be installed on dispenser as shown in dispenser section. Verify all numbers before fabrication.
- Fuel Blade Sign**  
Blade signs should be visible for both the consumer and C-store. See details and guidelines in this section for blade signs.
- Canopy columns**  
Clean, repair, prime and paint columns Marathon white. Columns that are unpainted brick or natural stone will be excused from the Marathon column color decoration. All other canopy column materials will be treated to Marathon color scheme or must be approved through the exception process with the Marathon reimage team.  
There are 2 column options:  
1. Painted structural steel columns are acceptable if they are in good condition.  
2. Clad columns are an acceptable option.
- Curbs, Island Forms & Bollards**  
All bollards in the fueling area will be painted Marathon Dark Gray. Do not paint bollards if they are stainless steel. Island forms are painted Marathon Dark Gray.  
Stainless steel and concrete curbs are acceptable substitutes to painting Marathon dark gray.  
Horizontal surface of the island must be natural concrete (pre-treat) or painted Marathon dark gray or can be natural stone.
- ADA Decal**  
ADA decal location, apply to designated dispenser. (only required on one pump on forecourt).
- Grade Labels, Safety decals and other Dispenser Decals**  
Use approved grade and safety decals.
- Amenity Units**  
Use approved amenity units. Amenity unit should be located near each dispenser. Gray is the required color.



# Canopy Columns

# Blade Signs



**Blade Sign With Diesel Text**

SCALE: NTS



**Blade Sign With Rec 90 Text**

SCALE: NTS



**Blade Sign Numbers**

SCALE: NTS



**1**



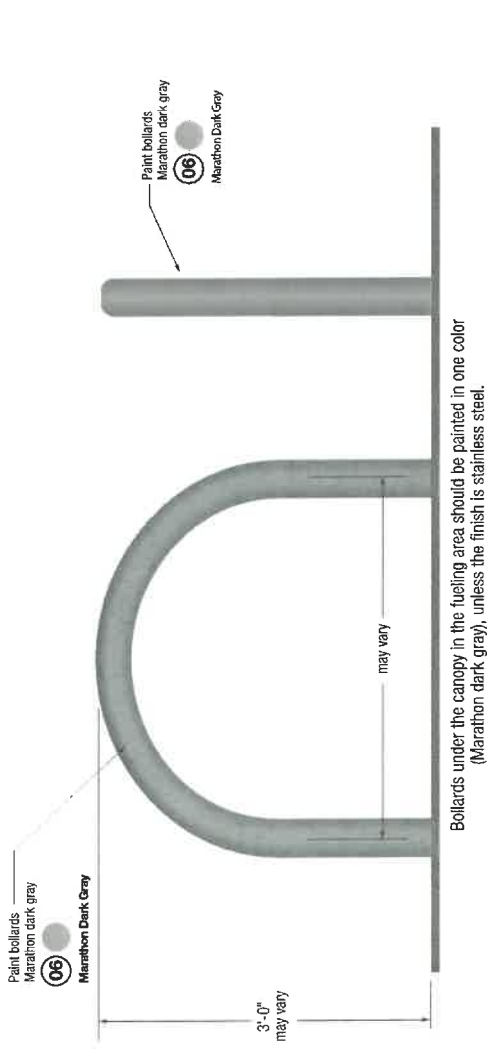
**2**



**3**

# Island Bollards

# Light Poles



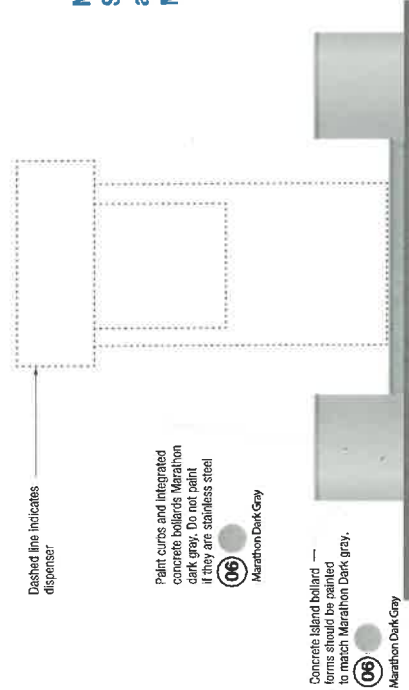
**Fuel Island bollard - front elevation - typical arch shape**

SCALE: 1" = 1'-0"

**Side elevation - typical arch shape**

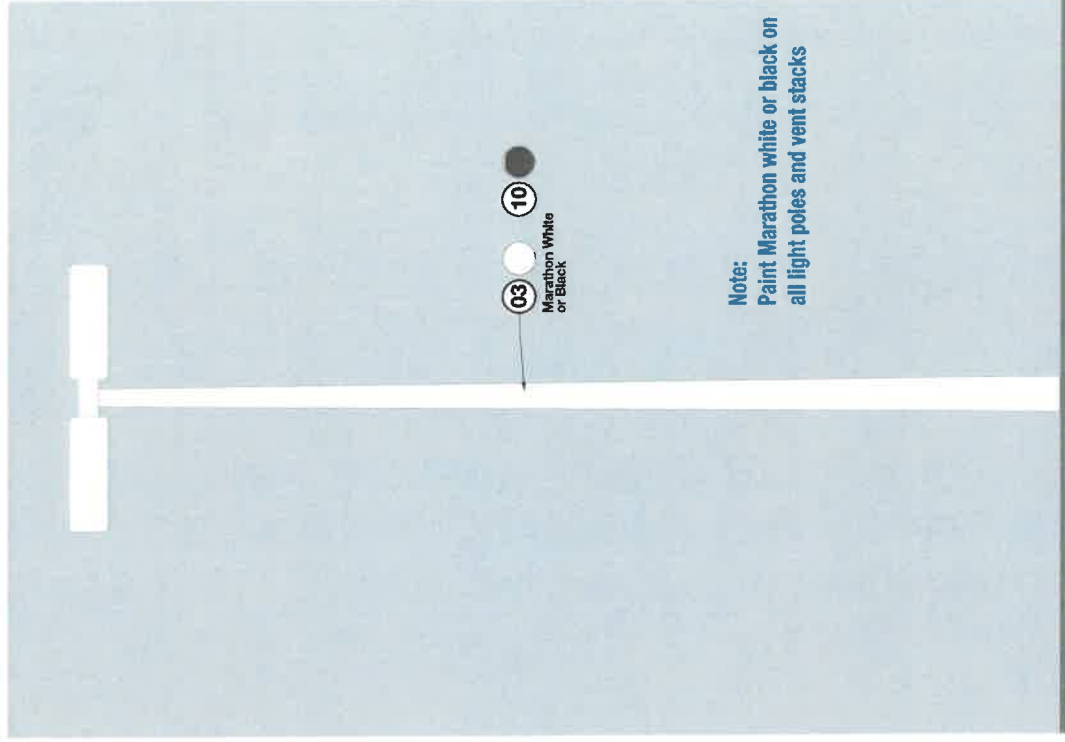
SCALE: 1" = 1'-0"

**NOTE: Patch and repair damaged on bollard.**



**Fuel Island concrete bollard - front elevation**

SCALE: 1" = 1'-0"



**Typical light pole elevation**

SCALE: NTS

# Color Specs



01

## Marathon Blue

Material / Color Match  
 Pantone 296 C Match  
 3M Film - 3630-157  
 ACM - Special Match Color



## Paint Spec

Shervin Williams  
 SW7042

Color Usage on Site  
 Canopy Fascia, Dispenser, Blade Sign, MD Panels, Store Fascia



02

## Marathon Light Blue

Material / Color Match  
 Pantone 3065 C



## Paint Spec

Shervin Williams  
 SW7040 Site White  
 Satin Finish

Color Usage on Site  
 Dispenser Door, MD Logo

03

## Marathon White

Material / Color Match  
 Pantone 11-0801 TCX Bright White

## Paint Spec

Shervin Williams  
 SW7046 Extra White  
 Satin Finish

Color Usage on Site  
 Canopy Columns, Sign Poles, Dispenser, MD, Blade Sign, Vinyl on Blade Signs, Store Sign Graphics

03A

## Marathon Canopy Deck White

Material / Color Match  
 Pantone 11-0801 TCX Bright White

Shervin Williams  
 SW4089 Pure White  
 Satin Finish

Color Usage on Site  
 Under Canopy Deck



08

## Marathon Store Gray

Material / Color Match  
 Pantone Cool Gray 7 C Match



## Paint Spec

Shervin Williams  
 SW7066 Gray Matters  
 Satin Finish

Color Usage on Site  
 Store Fascia



09

## Marathon Bright Blue

Material / Color Match  
 Pantone 289 C Match



## Paint Spec

Shervin Williams  
 SW6965 Innomptu  
 Satin Finish

Color Usage on Site  
 Dispenser (outline around fuel type)



10

## Marathon Black

Material / Color Match  
 Black 6 C Match



## Paint Spec

Shervin Williams  
 SW4040 Black  
 Satin Finish

Color Usage on Site  
 Diesel Columns, Diesel Canopy Deck



11

## Marathon Green

Material / Color Match  
 Pantone 2423 C Match



## Paint Spec

Shervin Williams  
 SW6925 Straight Forward Green  
 Satin Finish

Color Usage on Site  
 Diesel Gate Applications, Dispenser Diesel Door, Diesel Race Sign



12

## Marathon Dark Green

Material / Color Match  
 Pantone 344 C Match



## Paint Spec

Shervin Williams  
 SW6927 Green Belt  
 Satin Finish

Color Usage on Site  
 Diesel Gate Applications, Dispenser Diesel Door



04

## Marathon Gray

Material / Color Match  
 Pantone 429 C  
 Canopy Fascia



## Paint Spec

Shervin Williams  
 SW7072 Online  
 Satin Finish

Color Usage on Site  
 Blade Sign, Dispenser



05

## Marathon Light Gray

Material / Color Match  
 Pantone Cool Gray 1 C



## Paint Spec

Shervin Williams  
 SW7070 Site White  
 Satin Finish

Color Usage on Site  
 Dispenser Door, Valance



06

## Marathon Dark Gray

Material / Color Match  
 Pantone Cool Gray 10 C



## Paint Spec

Shervin Williams  
 SW7088 Cobalt Gray  
 Satin Finish

Color Usage on Site  
 Canopy/Island Curbs, Bollards



07

## Marathon Red

Material / Color Match  
 Pantone 185 C Match  
 3M 3630-43



## Paint Spec

Shervin Williams  
 TRD  
 Satin Finish

Color Usage on Site  
 MD, Canopy Fascia, Canopy Signs, Dispenser, Marathon Logo



EXISTING



PROPOSED RETROFIT

Overall Height 32' 2"  
Total Square Footage: 130'

Retrofit Logo cabinet with new faces.

Retrofit Party Mart, 1P pricer, Endurance cabinet with new faces, digits and retainer mounted internal LED lighting.

Paint MID poles white.



DISCLAIMER: Renderings are for graphic purposes only and not intended for actual construction dimensions. For window requirements, actual dimensions and mounting detail, please refer to engineering specifications and install drawings. © 2021 Everbrite, LLC, all rights reserved. This document is confidential and proprietary to Everbrite, LLC. Any disclosure to a third party is expressly prohibited.

Customer: MARATHON  
Project No: 480938-3  
Date: 03/07/2023  
Location & Site No: 330 S Perry Street  
Napoleon, OH MA7586

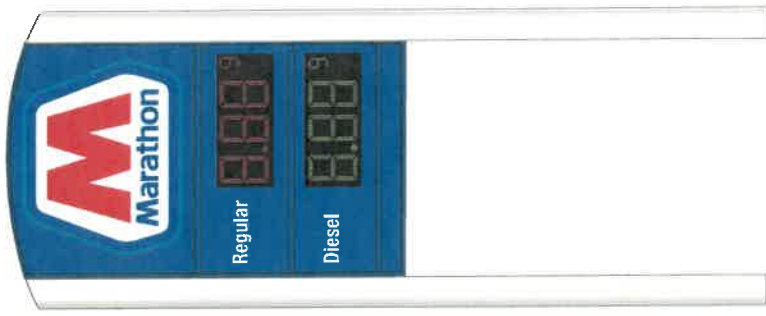
Description: Retrofit Shell to MA Endurance: Logo ID, 1PR, 2 IMP

Revised:  
Revised:

CUSTOMER SIGNATURE  
LANDLORD SIGNATURE

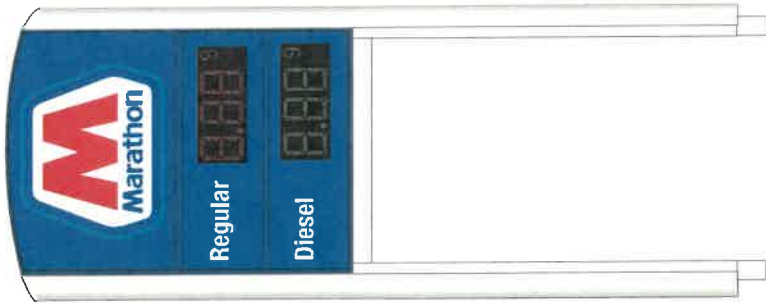
DATE  
DATE

Customer Approval: Graphics and colors on file will be used unless otherwise specified by customer. Please review drawing carefully. By signing below, you agree to graphics as shown above, and to location of sign as shown. Please return signed copy back to Everbrite.



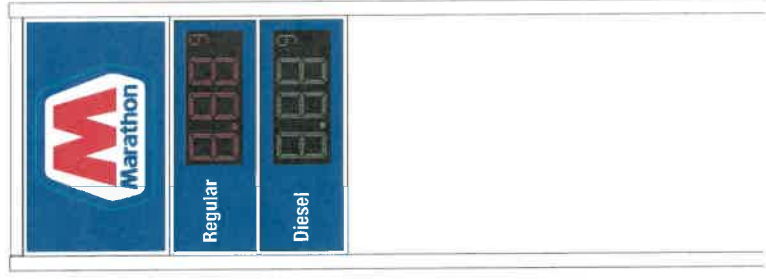
V10

SCALE: NTS



V17

SCALE: NTS



V08

SCALE: NTS



HI-RISE

SCALE: NTS

**Please contact Everbrite for price sign quotes.**

**Disclaimer:** Renderings are for graphic purposes only and not intended for actual construction dimensions. For windload requirements, actual dimensions and mounting detail, please refer to engineering specifications and install drawings. These drawings and designs are the exclusive property of Everbrite LLC. Use of, or duplication in any manner without express written permission of Everbrite LLC is prohibited.

# Approved Vendors



**Canopy fascia, channel letters, column cladding, lane identifiers, dispenser valance, risers, bezel, lower door, and island equipment**

**Anna Verdiguel**

Email: [averdiguel@federalheath.com](mailto:averdiguel@federalheath.com)

Phone #: 262-635-1129

States Supported: CA, CO, DE, GA, ME, NC, NH, NJ, NM, NY, OR, PA, RI, SC, VA, WV

**Blair Boyd**

Email: [bboyd@federalheath.com](mailto:bboyd@federalheath.com)

Phone #: 903-589-2163

States Supported: AZ, MN, ND, NE, SD, WY

**Catherine Martinez**

Email: [cmartinez@federalheath.com](mailto:cmartinez@federalheath.com)

Phone #: 262-635-1181

States Supported: AL, FL, ID, LA, MS, NV, OH, TN, TX, UT

**Danielle Sanders**

Email: [dsanders@federalheath.com](mailto:dsanders@federalheath.com)

Phone #: 903-589-3089

States Supported: IA, IL, IN, KY, MI, WI



**Price signs, high rise signs, and electronic message centers**

**Joshua Scott**

Email: [jscott@everbrite.com](mailto:jscott@everbrite.com)

Phone #: 414-529-7274

**Brianna Snell**

Email: [bsnell@everbrite.com](mailto:bsnell@everbrite.com)

Phone #: 414-529-7214

**Eric Dehli**

Email: [edehli@everbrite.com](mailto:edehli@everbrite.com)

Phone #: 414-529-7184



Detailed Information

Standard Windload  
 Retainer Quantity: 2  
 Retainer Size: 97.625"H X 95.625"W  
 Existing Cab: 98"H X 96"W  
 Area: 64.83 SQ FT  
 Retainer Color: Sky White

Detail 1: Logo  
 VO: 93.625"H X 91.625"W  
 Marathon Endurance Logo Flat Emboss Face

Est. Crated Weight: 579 pounds  
 Crate HxLxW: 106x108x23"  
 Freight Class: 250



DISCLAIMER: Renderings are for graphic purposes only and not intended for actual construction dimensions. For windload requirements, actual dimensions and mounting detail, please refer to engineering specifications and install drawings. These drawings and designs are the exclusive property of Everbrite LLC. Use of, or duplication in any manner without express written permission of Everbrite LLC is prohibited.

Customer: Marathon Endurance		Description:	
Project No: PP480938A	Scale: N/A		
Date: 03/06/2023	Drawn By: AM		
Location & Site No: , 330 S Perry St, Napoleon, OH, 43545-2032		Version: 2	
SIGNATURE _____		DATE _____	

**Customer Approval:** NOTE: Unless specified by customer, all depth of embossing will be determined by Everbrite Engineering or existing customer specifications on file. Colors and graphics on file will be used unless otherwise specified by customer.  
 Please read carefully, check appropriate  Sketch OK as is  New Sketch Required  
 box and fax back to Everbrite:



Detailed Information

Standard Windload  
 Retainer Quantity: 2  
 Retainer Size: 97.625"H X 95.625"W  
 Retainer Type: Hinged  
 Existing Cab: 98"H X 96"W  
 Area: 64.83 SQ FT  
 Retainer Color: Sky White

Detail 1: Text  
 VO: 22.4063"H X 91.625"W  
 Marathon Endurance Flat Imprint Face  
 Text Line 1: Party Mart Artwork

Detail 2: Priceline  
 VO: 44.8125"H X 91.625"W  
 Digit Type: Lumidigit 4 (Flat Faces)  
 Priceline 1: Red 24", Stacked

Detail 3: Logo  
 VO: 22.4063"H X 91.625"W  
 Marathon Endurance Endurance Fuels Flat Face

1 - 20 Amp Circuit(s) Required  
 LEDs Total Draw: 2 Amps

Est. Crated Weight: 612 pounds  
 Crate HxLxW: 106x108x23"  
 Freight Class: 175



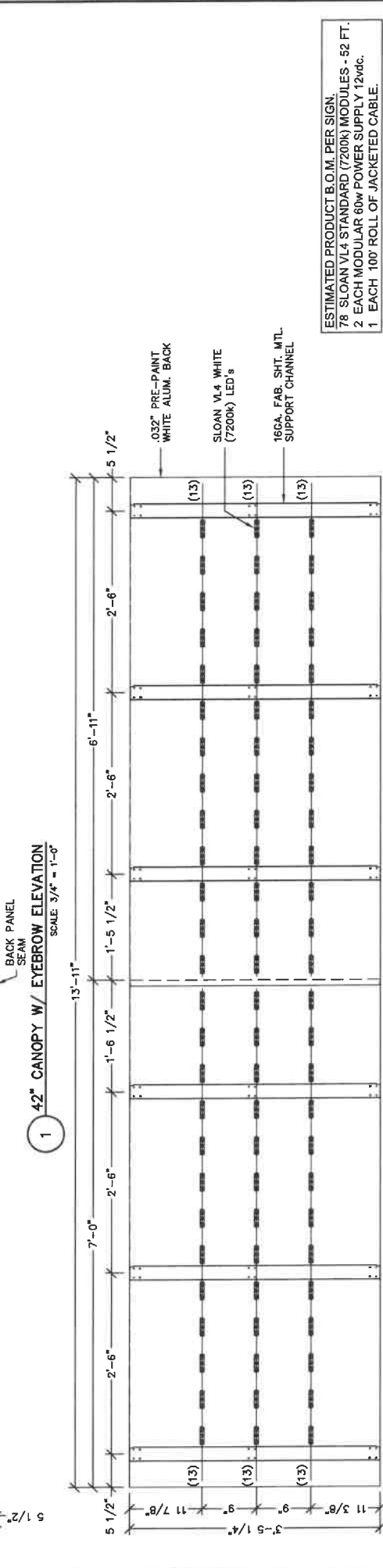
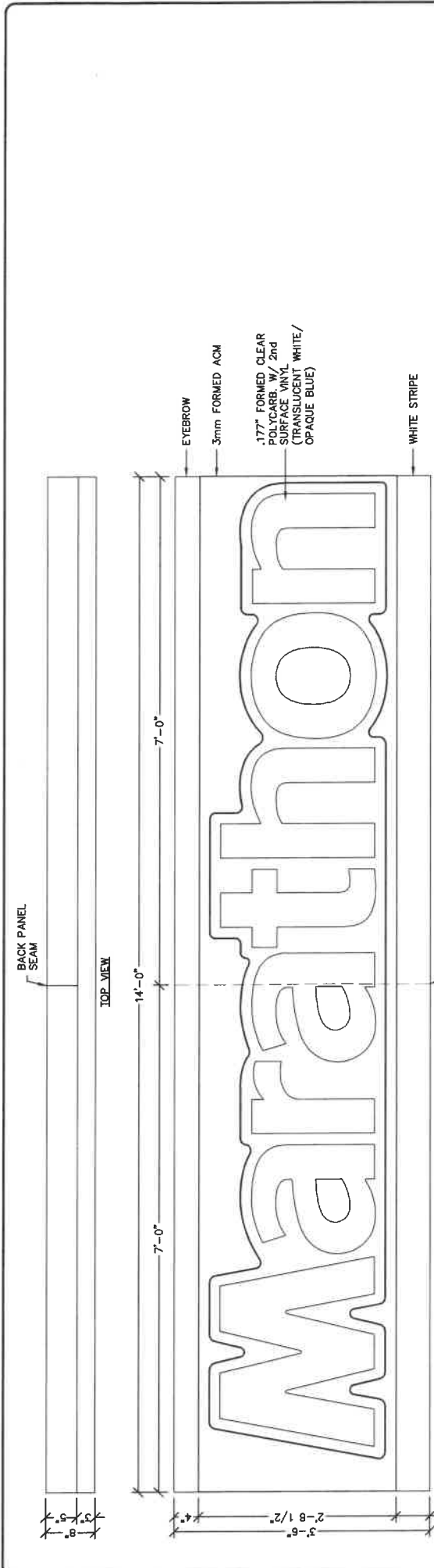
Customer: Marathon Endurance  
 Project No: PP480938B  
 Date: 03/06/2023  
 Location & Site No: , 330 S Perry St, Napoleon, OH, 43545-2032

Customer: Marathon Endurance		Description:	
Project No: PP480938B	Scale: N/A		
Date: 03/06/2023	Drawn By: AM		
Location & Site No: , 330 S Perry St, Napoleon, OH, 43545-2032		Version:2	
SIGNATURE _____		DATE _____	

**Customer Approval:** NOTE: Unless specified by customer, all depth of embossing will be determined by Everbrite Engineering or existing customer specifications on file. Colors and graphics on file will be used unless otherwise specified by customer.  
 Please read carefully, check appropriate  Sketch OK as is  New Sketch Required  
 box and fax back to Everbrite:

DISCLAIMER: Renderings are for graphic purposes only and not intended for actual construction dimensions. For windload requirements, actual dimensions and mounting detail, please refer to engineering, specifications and install drawings. These drawings and designs are the exclusive property of Everbrite LLC. Use of, or duplication in any manner without express written permission of Everbrite LLC is prohibited.





ESTIMATED PRODUCT B.O.M. PER SIGN:  
 78 SLOAN VL4 STANDARD (7200K) MODULES - 52 FT.  
 2 EACH MODULAR 60w POWER SUPPLY 12Vdc.  
 1 EACH 100' ROLL OF JACKETED CABLE.

1. SLOAN VL4 STANDARD (7200K) LAID OUT AT 2.5 MOD/FT.
2. EACH STANDARD 60w POWER SUPPLY CAN RUN UP TO 40FT/150 MODS.
3. LAYOUT BASED ON A SIF CABINET AT 5" DEEP.

SHEET NO: S-1  
 OF: 2

DESIGN NO: 42" CANOPY A  
 PROJECT MGR: C. TUOHY  
 DRAWN BY: D. DUPREE  
 DATE: OCT. 12, 2022  
 JOB NO: 35-75041-00



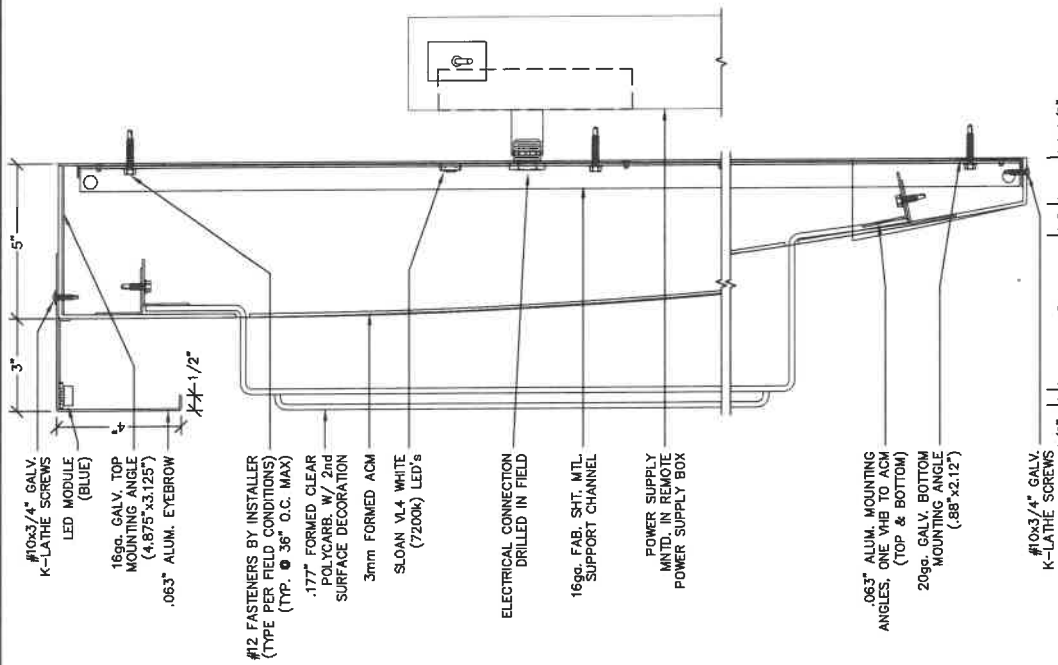
MARATHON 42" CANOPY W/ EYEBROW REV A.dwg

NO.	REVISIONS	DATE	BY
1	NOTED CENTER HOLES UP 1/2"	10/17/23	DB

This original drawing is provided as part of a planned project and is not to be exhibited, copied or reproduced without the permission of Federal Health Sign Company LLC or its authorized agent. ©

Lithonetics Inc.  
 ESTABLISHED IN 1964 AS THE FIRST COMPANY TO  
 SMALL METAL SIGN FABRICATOR

**FEDERAL HEALTH**  
**VISUAL COMMUNICATIONS**  
 4602 NORTH AVENUE, OCCASKEY, CO. 82058  
 (950) 941-0710



- #10x3/4" GALV. K-LATHE SCREWS
- LED MODULE (BLUE)
- 16ga. GALV. TOP MOUNTING ANGLE (4.875"x3.125")
- .063" ALUM. EYEBROW
- #12 FASTENERS BY INSTALLER (TYPE PER FIELD CONDITIONS) (TYP. Ø 3/8" O.C. MAX)
- .177" FORMED CLEAR POLYCARB. W/ 2nd SURFACE DECORATION
- 3mm FORMED ACM
- SLOAN VL4 WHITE (7200K) LED's
- ELECTRICAL CONNECTION DRILLED IN FIELD
- 16ga. FAB. SHT. MTL. SUPPORT CHANNEL
- POWER SUPPLY MTD. IN REMOTE POWER SUPPLY BOX
- .063" ALUM. MOUNTING ANGLES, ONE VHB TO ACM (TOP & BOTTOM)
- 20ga. GALV. BOTTOM MOUNTING ANGLE (.88"x2.12")
- #10x3/4" GALV. K-LATHE SCREWS

1 SECTION DETAIL  
SCALE: 3" = 1'-0"

This original drawing is provided as part of a planned project and is not to be exhibited, copied, or used without the permission of Federal Health Sign Company LLC or its authorized agent. ©

Underwriters Laboratories Inc. ELECTRICAL TO USE U.S. LISTED COMPONENTS AND SHALL MEET ALL A.E.C. STANDARDS

**FEDERAL HEALTH**  
VISUAL COMMUNICATIONS  
4402 NORTH AVENUE, OCCAHSKE, CA 92008  
(951) 941-0718

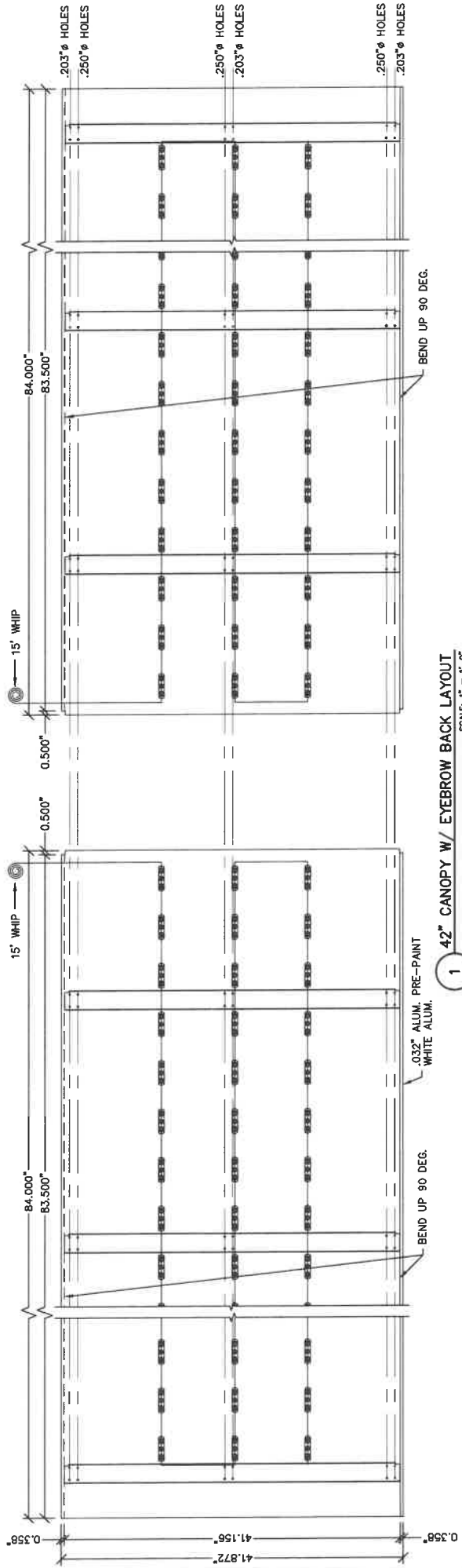
NO.	REVISIONS	DATE	BY
1	MOVED CENTER HOLES UP 1/2"	11/21/22	DD
2			
3			
4			
5			

**MARATHON**  
VARIOUS LOCATIONS

DESIGN NO: 42" CANOPY A  
PROJECT MGR: C. TUOHY  
DRAWN BY: D. DUPREE  
DATE: OCT. 12, 2022  
JOB NO: 35-75041-00

SHEET NO: S-2  
OF: 2

MARATHON 42 CANOPY W EYEBROW REV A.dwg



1 42" CANOPY W/ EYEBROW BACK LAYOUT  
SCALE: 1" = 1'-0"

SHEET NO. P-1 OF 2

DESIGN NO. 42" CANOPY A  
PROJECT MGR.: C. TUOHY  
DRAWN BY: D. DUPREE  
DATE: OCT. 12, 2022  
JOB NO. 35-75041-00



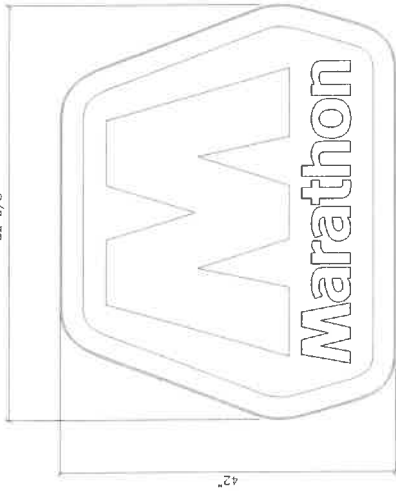
MARATHON 42" CANOPY W EYEBROW REV A.dwg  
VARIOUS LOCATIONS

NO.	REVISIONS	DATE	BY
1	MOVED CENTER HOLES UP 1/2"	11/7/23	DD

This original drawing is provided as part of a planned project and is not to be exhibited, copied or reproduced without the permission of the author. Sign Company LLC or its authorized agent.  
 Underwriters Laboratories Inc. LABORATORIES INC.  
 ELECTRONIC TO USE I.E.-49 LISTED COMPONENTS AND SHALL MEET ALL I.E.C. STANDARDS

**FEDERAL HEALTH COMMUNICATIONS**  
 VISUAL COMMUNICATIONS  
 4602 NORTH AVENUE, OCAWANS, CA. 92668  
 (760) 944-0716

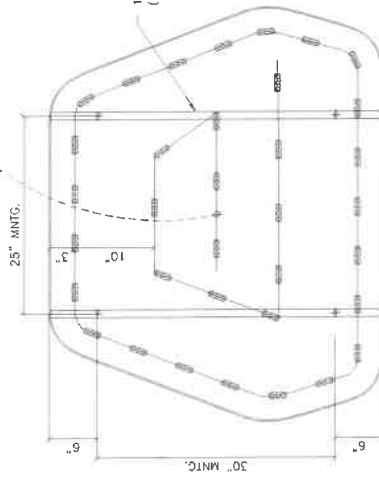
52 3/8"



FORMED CANOPY CS SIGN ELEVATION VIEW

SCALE: 1"=1'-0"

LOW POWER SUPPLY  
NET RATED PS  
PRIMARY 120V AC



ELECTRICAL / LED LAYOUT DETAIL VIEW

SCALE: 1"=1'-0"

SIGN SPECIFICATIONS:

SIGN SIZE:  
AREA ... CLOSED RECTANGLE 15.2943 SQ. FT.  
ACTUAL SIZE ... 42" x 52-7/16"  
SIGN MOUNTING HEIGHT ... 100 MPH (3 SEC. EXPOSURE C)  
COMPLIANT W/ NATIONAL BUILDING CODES & STANDARDS  
(IBC, UBC, BOCA, ASCE, ASCE7, ACI, & ALUM. DSGN. MANUAL)

ELECTRICAL:  
AMPS ... 1.2 AMPS  
CIRCUITS ... (1) 20  
VOLTS ... 120

COLORS:  
REFER TO COLOR RENDERING  
FOR COLOR AND GRAPHIC SPECS

This original drawing is provided as part of a proposal and is not to be reproduced without the permission of Federal Health Sign Company LLC or its authorized agent.



**FEDERAL HEALTH**  
VISUAL COMMUNICATIONS  
1500 N. BOLTON, JACKSONVILLE, TX 75766  
(905) 565-2100

ATTRACED FACE TO RETURN  
USING #6 PAN HD SCREWS

FORMED AND EMBOSSED  
CAP OVER FACE

1 1/2" x .060 ALUM. RETURN  
TO SIT ON TOP OF ALUM. BACK

5 1/4"

4 1/2"

1/2"

1/4"

FORMED AND EMBOSSED  
CAP OVER FACE  
w/ 2nd SURF. DECORATION  
(ILLUMINATED RETURNS)

ELECTRICAL LEADS TO SUPPLY BOX  
EXIT BACK OF SIGN

ESTIMATED PRODUCT B.O.M. PER SIGN:  
35 V/L4 STANDARD (7200K) MODULES - .25 FT  
1 EACH 100' ROLL OF JACKETED CABLE  
1 EACH 100' ROLL OF JACKETED CABLE

1) V/L4 STANDARD (7200K) LAID OUT AT 1.4 MOD/FT.  
1) EACH STANDARD 60W POWER SUPPLY CAN RUN UP TO 40FT/56 MODS  
V/L4 STANDARD (7200K) MODULES  
3) LAYOUT BASED ON A 5/7' CABINET 4.5" CAN DEPTH

FASTENERS PROVIDED BY INSTALLER  
PER FIELD CONDITIONS

1/4" DRAIN HOLES  
@ LOW POINT OF BACK  
(AS NEEDED)

CITS LOGO DETAIL VIEW  
SCALE: N.T.S.

42" MARATHON CANOPY LOGO SGN  
CANOPY - VACUUM FORMED

LED ILLUMINATION

NO.	REVISIONS	DATE	BY
1	REUSE LED LAYOUT; REMOVED PS BOX	05.28.22	R.R.R.
2			
3			
4			
5			

JOB NO.	222408	SHEET NO.	1
DRAWN BY:	R_RIOS	OF	1
DRAWING NO.	MC_42_LG_12V		